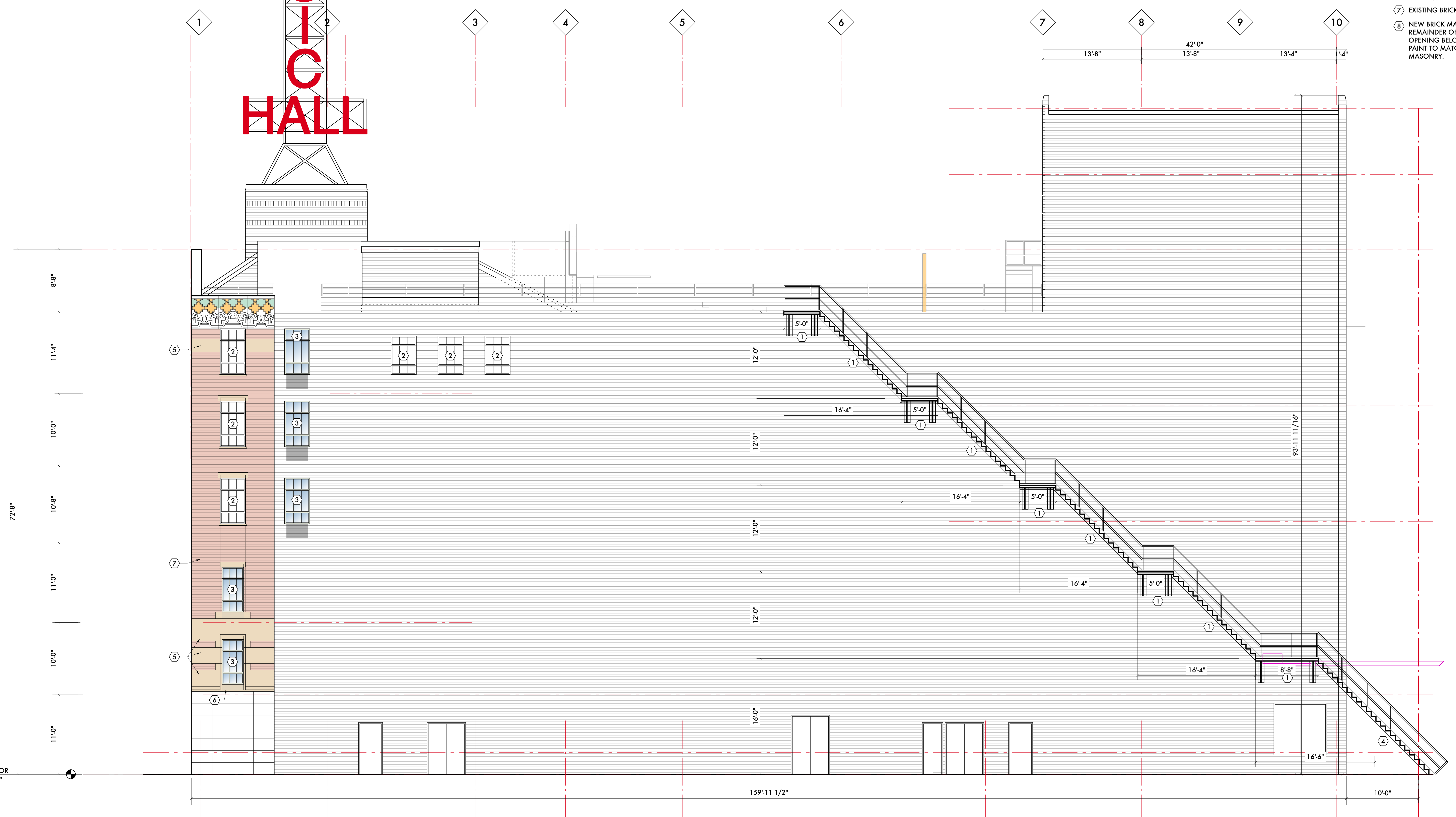


- KEYED NOTES:**
- ① NEW STEEL FIRE ESCAPE - PAINTED STRUCTURAL STEEL MEMBERS. PROVIDE OPEN GRATING STEEL TREADS AND LANDINGS, PROVIDE 1 1/2" SQUARE OR ROUND STEEL TUBE HANDRAIL/GUARD AT 44" ABOVE STAIR TREAD/LANDING
 - ② EXISTING STEEL WINDOW TO REMAIN
 - ③ NEW STEEL WINDOW TO MATCH EXISTING WINDOWS. INFILL PORTION OF FORMER DOOR OPENING W/ NEW MASONRY TO MATCH EXISTING BRICK MASONRY
 - ④ BOTTOM OF FIRE ESCAPE W/ COUNTER-WEIGHT
 - ⑤ EXISTING MANKOTA STONE
 - ⑥ NEW MANKOTA STONE TO FILL IN REMAINDER OF FORMER DOOR OPENING BELOW NEW WINDOW
 - ⑦ EXISTING BRICK MASONRY
 - ⑧ NEW BRICK MASONRY TO FILL IN REMAINDER OF FORMER DOOR OPENING BELOW NEW WINDOW. PAINT TO MATCH SURROUNDING BRICK MASONRY.

MUSIC HALL



NEW -1 LEVEL
-14'-0" (+83'0")

NEW -2 LEVEL
-28'-0" (+69'0")

2 EXISTING ALLEY WEST ELEVATION
SCALE: 3/16" = 1'-0"

03/01/24 Historic Commission
02/14/24 Historic Commission
Date: Issued For:
Music Hall
350 Madison
Detroit, Michigan 48226
studiozONE : DETROIT
architectural
urban DESIGN
interior
350 Madison Avenue Detroit, Michigan 48226
4th Floor 313.549.2700 voice
http://www.studiozonedetroit.com 313.875.2438 fax

Project Number: **2012-06**
Sheet Title:
ALLEY ELEVATION

Sheet Number:
A5.11
© 2024 studiozONE, llc