



SESSION 1A:

Community Based Activation & Beautification

3:50 - 4:50

SPEAKERS

Danielle Daguio: Keep Growing Detroit & Detroit Black Farmer Land Fund

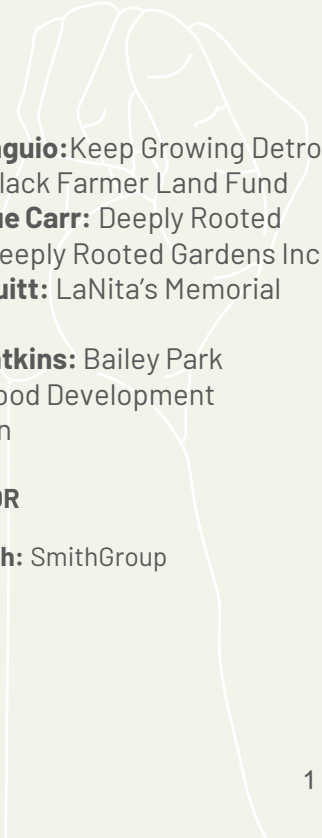
Dazmonique Carr: Deeply Rooted Produce, Deeply Rooted Gardens Inc.

Carolyn Pruitt: LaNita's Memorial Garden

Katrina Watkins: Bailey Park Neighborhood Development Corporation

FACILITATOR

Rachel Smith: SmithGroup





2022 CONTRIBUTIONS TO DETROIT'S LOCAL FOOD ECOSYSTEM

GARDENS BY TYPE

1,433 FAMILY
120 SCHOOL
383 COMMUNITY
93 MARKET



GROWN IN DETROIT

43 GROWERS
580 CSA BOXES
483 ONLINE ORDERS
65 HOLIDAY SHARES
3,340 POUNDS OF
PRODUCE DONATED



ENGAGEMENT

62 EVENTS IN
COMMUNITY
143 EVENTS AT KGD
FARM



BUILDING UP GARDENS

158 SITE VISITS
6 IRRIGATION STATIONS
6 HIGHTUNNELS
244 SOIL TESTS

SEEDS & PLANTS DISTRIBUTED

59,624
PACKS OF SEEDS
233,813
TRANSPLANTS



VOLUNTEERS

64 VOLUNTEER
GROUPS
2,302 TOTAL
VOLUNTEERS
5,165 TOTAL HOURS
SERVED



Dazmonique Carr
Founder & Director of Operations
Deeply Rooted Produce
Deeply Rooted Gardens Inc.



**Focus Areas: Food Access,
Mobility, Land access,
maximizing land use for food**

Deeply Rooted Produce



Deeply Rooted Produce

- Subscription & online grocery services
- Donation based meals
- Fresh Prescription Food Partner
- EBT, WIC Project Fresh, Senior Project Fresh



Deeply Rooted Gardens Inc.

- Land activation
- Edible landscape identification
- Grant Writing for farmers
- Garden Installations
- Strategic planning & development for land use
- Sustainable food systems



future vacant land activation

Edible landscapes:



Key words: permaculture, aquaculture, rain water gardens, permeable structures



- increasing access to already planted/existing fruit trees that are managed in a way for collection.
- Sensory gardens with name tags, small play areas integrated with the earth
- activating & maintaining school gardens outside of Food Corps Work

Integrated spaces:



Key words: charging stations, snack & equitable entrepreneurial booths, alternative power source, nature prioritized & worked around, streamlined composting, food truck parks

- activating & maintaining school gardens outside of Food Corps Work
- specific but connected areas where different things can be done



Priorities...



Assist with implementing edible landscapes & identifying edible pre-existing fruit trees

Acquiring landownership of these lots with pre-existing fruit trees that will maintain them & integrate them into new developments

Increased the consumption of Detroit grown food by 20% each year. Tracked by different metrics

Decrease food/plants sent to landfill by 10% & recycling food waste into the food growing systems

Deeply Rooted Produce

Contact Us

deeplyrootedproduce.com

313-949-3226

connect@deeplyrootedproduce.com





MY COMMUNITY S.P.E.A.K.S

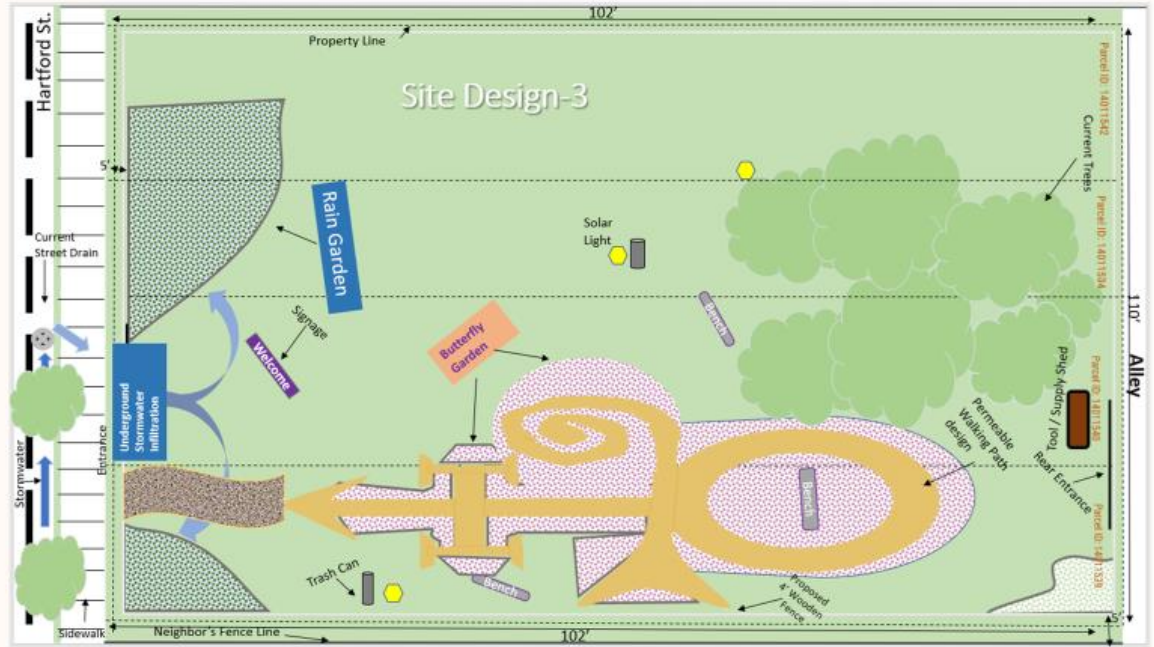
TARGET AREAS

- Neighborhood Stabilization & Beautification
- Health & Wellness
- Advocacy



Solution Focused

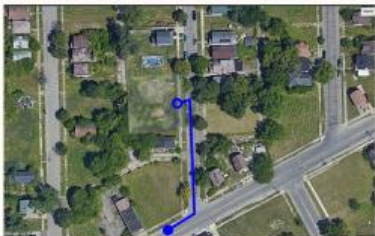
- Flooding
- Overgrown Grass
- Illegal Dumping
- Functional green spaces



LANITA'S MEMORIAL PARK

Rain Garden

- 6000 square feet of impervious surface managed
- 1 foot ponding depth
- Stormwater captured: 12,791 gallons
- Depth 3 feet



Pollinator Garden

- Over 19 different plant species



BIRD MEADOW



SHIPPING CONTAINER SOLUTIONS



- Small Business
- Affordable Housing
- Office
- Studio
- Meeting Space
- Education
- Resource Hub
- Library/ Reading Lounge





Youth Helping With Park Beautification



Bailey Park Beats



Bailey Park
Neighborhood
Development
Corporation

The project will highlight the legacies of some of the first African American doctors, lawyers, nurses and business owners that lived there. The alleyway will be an attraction where visitors are **educated**, **enlightened** and **amazed**. Longtime residents will enjoy seeing the stories of their place honored permanently while ensuring those stories are passed down to the next generation.



Bailey Park Grounds Crew

Helping the Windemere Block
Club with their Alleyway Cleanup