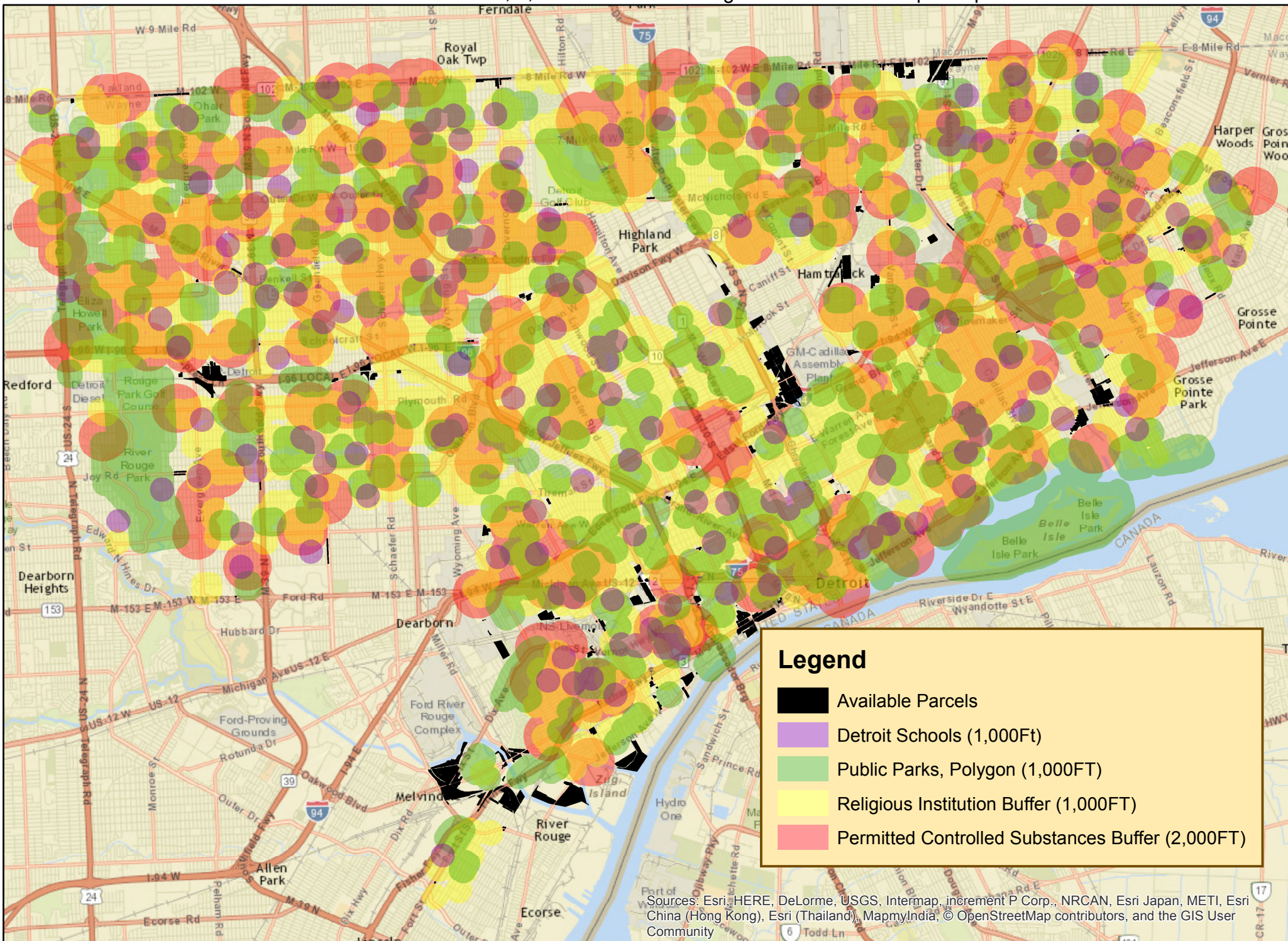


Scenario3: B4 and M1-M5; 1,000 ft. buffer from schools; 2,000 ft. buffer from controlled uses; 1,000 ft. buffer from religious institutions and public parks



Sources: Esri, HERE, DeLorme, USGS, Intermap, increment P Corp., NRCAN, Esri Japan, METI, Esri China (Hong Kong), Esri (Thailand), MapmyIndia, © OpenStreetMap contributors, and the GIS User Community